



1660 CHATTAHOOCHEE AVE.

ATLANTA, GA 30318

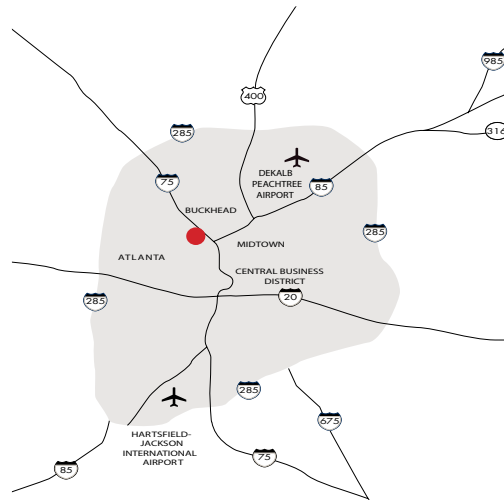
SUITE A
13,302 SF

Located in the heart of the Chattahoochee Industrial District, this building is conveniently located off I-75 and is within minutes of Midtown and Downtown Atlanta.

TOTAL SF	OFFICE SF	CLEAR HEIGHT	DOCK DOORS	ZONING	SPRINKLER	ELECTRICAL	ACCESSIBILITY	AVAILABLE
13,302	1,206	20'-0"	2 dh 2 di	I-1	YES	100amp/3ph	BY APPT	NOW

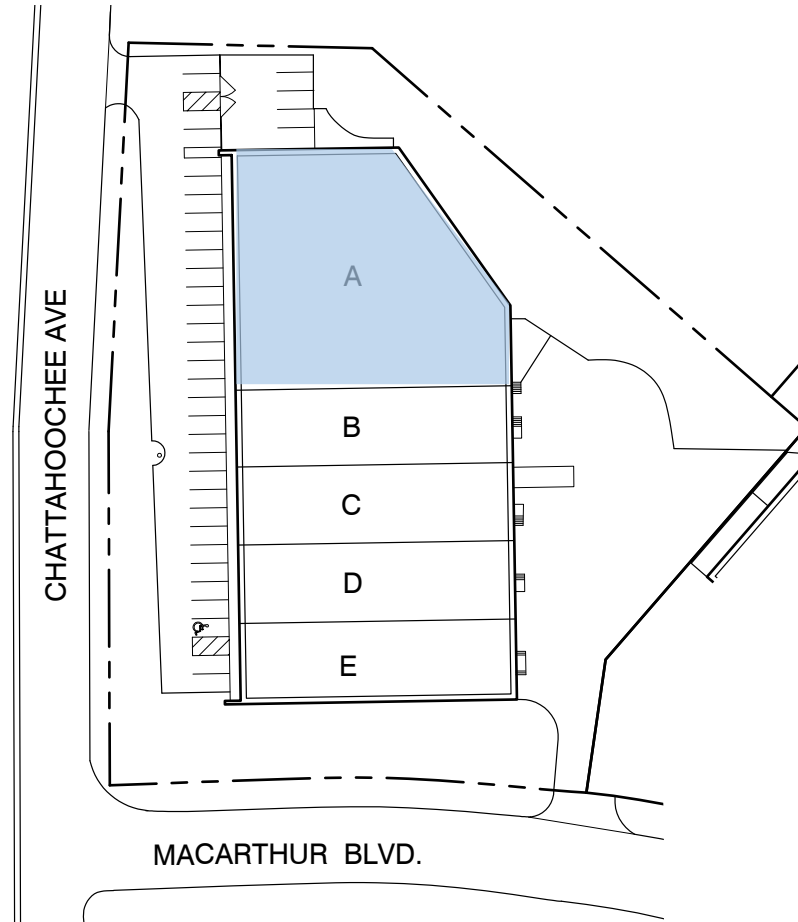
**EXCLUSIVELY
MARKETED BY:**

Jim Saine
(404) 898 9010
jsaine@seligenterprises.com



All measures, facts, and figures are subject to verification.

EXCEPT WITH RESPECT TO THE OBLIGATIONS OF LANDLORD WHICH ARE EXPRESSLY PROVIDED IN THE LEASE, LANDLORD HAS MADE NO REPRESENTATION OR WARRANTY WITH RESPECT TO THE STATUS OR EXISTENCE OF ANY LEASE, OCCUPANCY OR USAGE OF ANY SPACE, OR THE EXISTENCE, DESIGN OR LOCATION OF ANY BUILDINGS, IMPROVEMENTS, PAVING AREAS, CURBS, DRIVEWAYS OR OTHER COMMON AREAS WITH RESPECT TO THE SHOPPING CENTER OR ANY OUTPARCELS OR OTHER PROPERTY. LANDLORD WARRANTS THAT THE INFORMATION CONTAINED WITHIN THIS DRAWING IS PRESENTLY CORRECT, BUT LANDLORD MAKES NO WARRANTY, REPRESENTATION OR GUARANTEE AS TO ITS ACCURACY OR WHETHER IT WILL REMAIN AS CONFIGURED, AND LANDLORD RECOMMENDS THAT ALL INFORMATION BE FIELD VERIFIED PRIOR TO DESIGN AND CONSTRUCTION.



USER: c:\user\j\j\20_2021_11\1660 Chattahoochee Ave.dwg Plot: 1660 CHATTAHOOCHEE AVE (B) PLAN 06/25/21.dwg



1660 CHATTAHOOCHEE AVE: LEASING PLAN

1660 CHATTAHOOCHEE AVE.
ATLANTA, GA. 30318



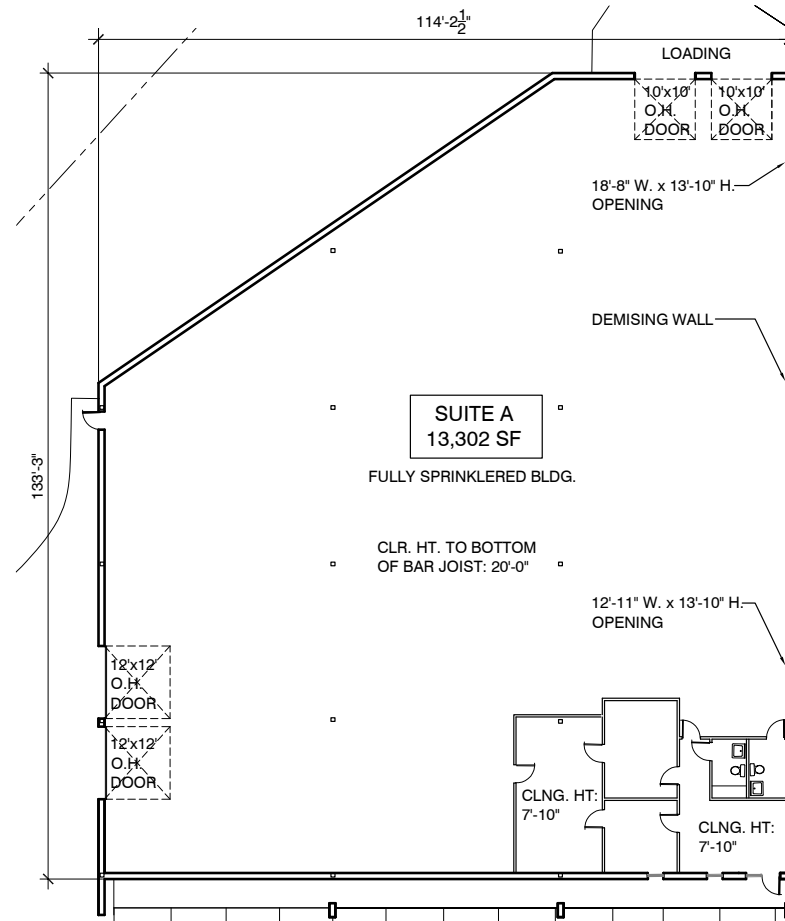
SCALE: 1" = 60'
DATE: 06/25/21

DRAWN BY: CO

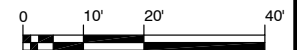


1100 SPRING STREET NW SUITE 550
ATLANTA, GEORGIA 30309-2848
TEL (404) 876-5511 FAX (404) 875-2629

EXCEPT WITH RESPECT TO THE OBLIGATIONS OF LANDLORD WHICH ARE EXPRESSLY PROVIDED IN THE LEASE, LANDLORD HAS MADE NO AGREEMENT, REPRESENTATION OR WARRANTY WITH RESPECT TO THE EXISTENCE OR NON-EXISTENCE OF ANY LEASE, OCCUPANCY OR USAGE OF ANY SPACE, OR THE EXISTENCE, DESIGN OR LOCATION OF ANY BUILDINGS, IMPROVEMENTS, PAVING AREAS, CURB CUTS, DRIVE OR OTHER COMMON AREAS WITH RESPECT TO THE SHOPPING CENTER OR ANY OUTPARCELS OR OTHER PROPERTY. LANDLORD BELIEVES THAT THE INFORMATION CONTAINED WITHIN THIS DRAWING IS PRESENTLY CORRECT, BUT LANDLORD MAKES NO WARRANTY, REPRESENTATION OR GUARANTEE AS TO ITS ACCURACY OR WHETHER IT WILL REMAIN AS COMPLETED, AND LANDLORD RECOMMENDS THAT ALL INFORMATION BE FIELD VERIFIED PRIOR TO DESIGN AND CONSTRUCTION.



OFFICE AREA=1,206 SF



SCALE: 1"=20'

DATE: 10/08/20

1660 CHATTAHOOCHEE AVE: SUITE A - FLOOR PLAN

1660 CHATTAHOOCHEE AVE.
ATLANTA, GA. 30318

DRAWN BY: CO



1100 SPRING STREET NW SUITE 550
ATLANTA, GEORGIA 30309-2848
TEL (404) 876-5511 FAX (404) 875-2629

1660 CHATTAHOOCHEE AVE.

ATLANTA, GA 30318

